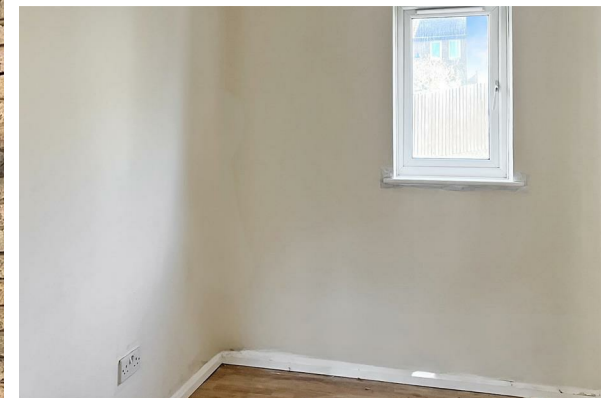




TO LET



5 Batchelor Close, Aylesbury, HP20 2BX

£800 Per Month

THE PROPERTY

Ground Floor One Bedroom Flat | Available Immediately | Allocated Parking | Quiet Cul-De-Sac Location

Located in a quiet residential cul-de-sac within Batchelor Close, Aylesbury (HP20), this ground floor one bedroom flat offers convenient, low maintenance living with immediate availability.

The property features a bright open plan lounge and kitchen area, providing a practical and versatile living space with good natural light. The kitchen offers ample storage and workspace, ideal for everyday use.

Being positioned on the ground floor, the property benefits from easy access and added convenience, making it an excellent option for a single professional or couple.

Externally, there is allocated parking along with a well kept communal setting.

Situated within easy reach of Aylesbury town centre, local amenities and transport links, the property is ideally located for day to day living.

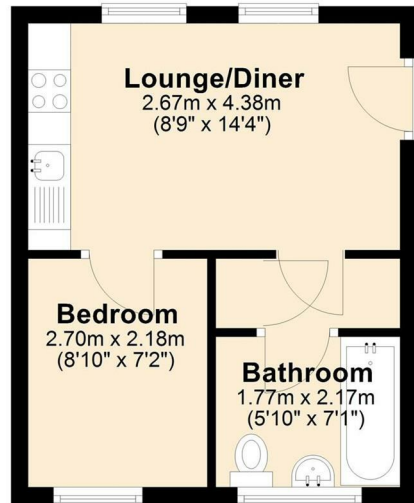
Council Tax Band A
Deposit £980

For viewings email agent

SITUATION

Ground Floor

Approx. 24.1 sq. metres (259.7 sq. feet)



Total area: approx. 24.1 sq. metres (259.7 sq. feet)

Directions

Market House Market Sq, Aylesbury, HP1201TN

Tel: 01296 767555 Email: francis@360-properties.co.uk <https://www.360-properties.co.uk>